



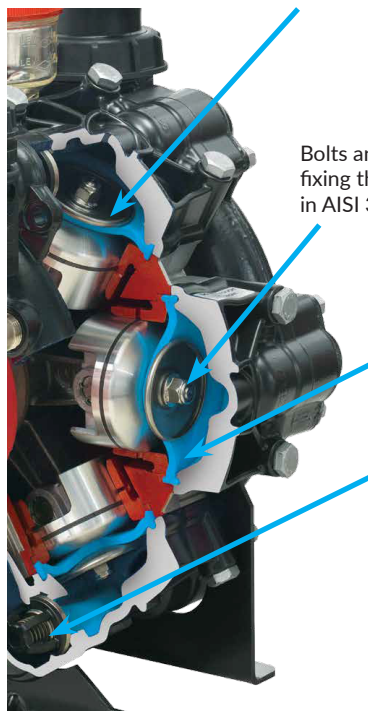
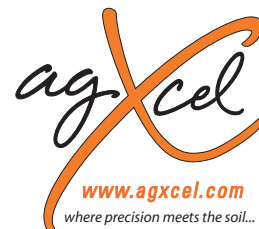
Utilizing AgXcel's proprietary PWM Hyd Valve for unmatched Hydraulic management and system performance.

AgXcel's PWM

Large valves in AISI 316 for best hydraulic efficiency and better resistance to chemical agents.

# GX5

## LFP SPECIALTY PUMP



Bolts and nuts for affixing the diaphragm in AISI 316.

Long-life BlueFlex® diaphragms for resistance to spraying chemicals and aggressive liquid fertilizers.

Seals in Viton on our LFP Pumps.



BlueFlex Diaphragm



GX5 LFP 45

The GX5 LFP45 is a great pump to use with vApplyHD. Minimal to Zero pulsation for steady, consistent flow. Low maintenance enhanced with Blueflex Technology.

- Low Maintenance
- Long-life Blue Flex™ diaphragms for resistance to spraying chemicals and aggressive liquid fertilizers
- Minimal Hydraulic Oil usage
- High Pressure capabilities
- All GX5 LFP System parts in contact with spraying liquids are polypropylene and stainless steel 316 for higher flow and better corrosion resistance
- Minimal to Zero pulsation allowing vApplyHD modules to maintain steady and consistent flow
- The 3+ cylinder design will allow the system to prime faster with less vibration during use.
- Range of .5 - 11 GPM flow rate (\*Higher volume systems available\*)
- **NEW** Blueflex Technology = Long-life diaphragms for resistance to spraying chemicals and aggressive fertilizers.

1

Our GX5 Hydraulic systems use low pressure diaphragm pumps that can apply a wide variety of chemicals with different viscosities, from .5 GPM to 55 GPM.

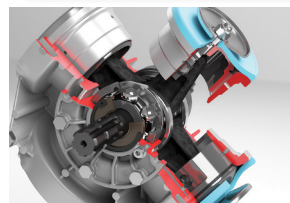
2

Our GX5 low pressure diaphragm hydraulic pump systems are simultaneously exquisitely sophisticated in terms of precision application of liquid fertilizer, perfectly in line with the need to protect the environment of today and tomorrow.

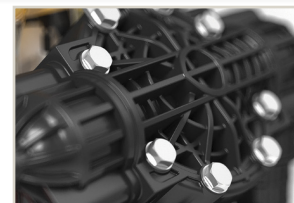
3

Designed for a wide range of professional agricultural application environments:

- Planting
- Drilling
- Side Dressing
- Strip-Tilling
- Pre-Bedding for Potatoes
- Custom Applications



Nº2 High Quality needle bearings under the connecting rods to reduce friction



Pump head in Nylon for aggressive chemicals.



**For all those especially demanding jobs go with the BLUEFLEX diaphragms that are a step ahead. Go beyond your expectations!**



**P 877.218.1981**

**W WWW.AGXCEL.COM**

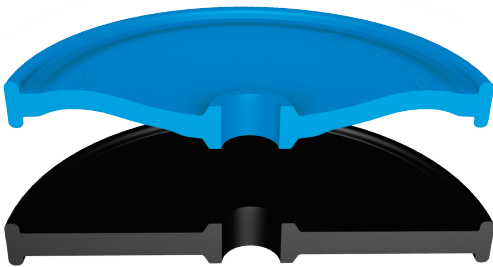
# NEW

# GX<sup>5</sup>

## HEAVY DUTY & LONGER LIFE DIAPHRAGM

### SPECIAL SHAPE

The special shape and thickness of the diaphragms has been carefully optimized to reduce mechanical stresses during the working cycle of the pump even under the most difficult working conditions.



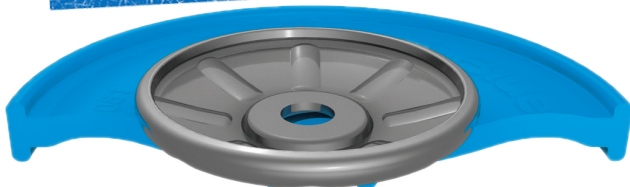
### BLUEFLEX SYSTEM

The combination of the new BlueFlex diaphragms when used with the new patented diaphragm plate is known as the “BlueFlex System”. This translates into heavy duty and long diaphragm life.

### PATENTED DIAPHRAGM PLATE FOR BLUEFLEX DIAPHRAGMS

The new patented diaphragm retaining plate has a shape that minimizes the possibility that the diaphragm can get caught or nicked by the diaphragm plate.

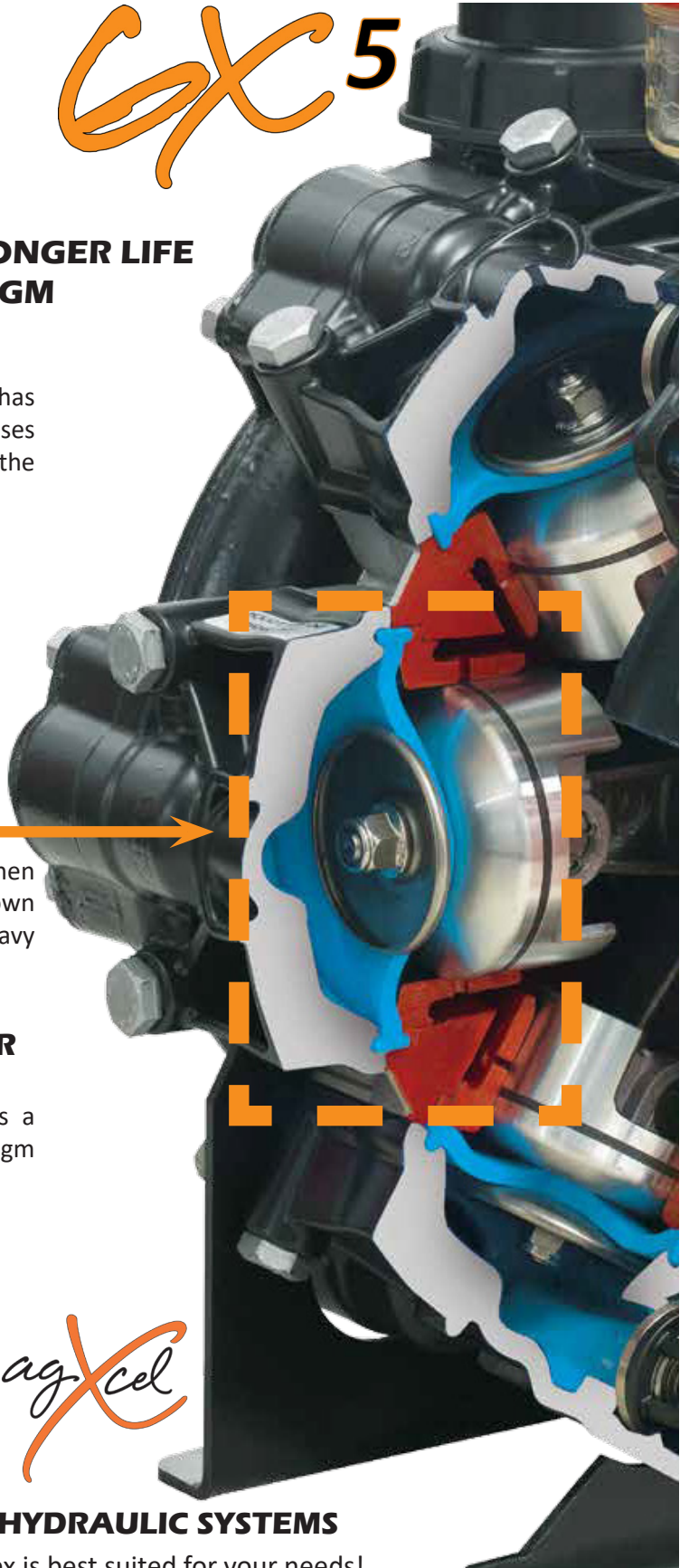
**PATENTED**



*agXcel*

### STANDARD FEATURE ON ALL GX5 HYDRAULIC SYSTEMS

Give us a call to find out which GX5 with BlueFlex is best suited for your needs!



**P 877.218.1981**

**W WWW.AGXCEL.COM**

# AGXCEL FERTILIZER APPLICATION

## GX5LFP Hydraulic Series

Planter & Grain Drill Fertilizer Application Systems

Reliability, Rapid Rate Response, and Minimal Maintenance

### AgXcel GX5 Hydraulic Diaphragm Pump Solution

AgXcel's line of diaphragm pumps are the most complete and accurate line of hydraulically driven pumps available for applying a variety of liquids including herbicides, pesticides, liquid fertilizers and hard-to-handle fluids. The GX5 pumps are available in a large flow range and this is due to the fact that they are hydraulically controlled. They deliver the highest grade of reliability, rapid rate response, and require minimal maintenance. The GX5 is a positive displacement pump so for every revolution of the pump shaft results in a specific volume of flow. Positive displacement pumps, unlike centrifugal can produce the same flow at a given speed (RPM) no matter what the discharge pressure.

Thus, positive displacement pumps are constant flow machines making the GX5 one of the most accurate volume placement pumps on the market.

#### AgX GX5 - Diaphragm Pump Features Include:

- Have good suction lift characteristics, some are low pressure pumps with low flow rates; others are capable of higher flow rates, dependent on the effective working diameter of the diaphragm & its stroke length. They can handle sludge and slurries with a relatively high amount of grit & solid content.
- Suitable for discharge pressure up to 1,200 bar
- Have great dry running characteristics
- Are up to 97% efficient.
- Have good self-priming capabilities
- Are superior in handling high viscous liquids
- There are no seals to ruin and it's nearly impossible for the system to develop air lock
- When the GX5 is mounted on an liquid cart or pull cart, the GX5 will easily draw liquid to supply even the highest demands for liquid placement on any implement

#### AGXCEL GX5 SMART HYDRAULIC SPECS

PUMP MODEL	# DIAPHRAGMS	MAX FLOW GPM
GX5 LFP45	3	11
GX5 LFP80	3	19
GX5 LFP120	3	30
GX5 LFP160	4	35
GX5 D250	6	55

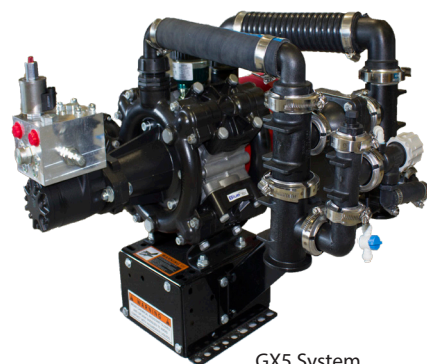
Simple Installation - The GX5 pump is completely assembled at the factory to make your installation process a breeze. Optional features like bypass agitation, pressure transducer kit and optional mounting brackets are available.

#### The AgXcel GX5 PWM Control Valve

AgXcel's custom built hydraulic PWM valve is designed to perform even under the most demanding environments. The PWM hydraulic valve is designed for both closed center and open center systems and can be tuned for either configuration with a simple valve adjustment.



AgXcel PWM Valve



GX5 System

GX5



GX5 D45 for vApply HD



AutoX- Compact Plus

NEW

#### AgX GX5 - LFP45 for vApply HD:

- Smooth & Accurate Application/High Speed Planters
- Blue Flex Technology = Enhanced Durability
- No Pulsating Liquid Management Design
- Sustainable High Pressure Capability to Prevent Orifice Plugging
- Low & High Volume Capacity - .5 - 11 GPM
- Improved Pressure Management

The AgXcel GX5 PWM hydraulic system has been utilized in various application environments like 2x2 application, strip till application, side dress just to name a few. As will all AgXcel solutions, the GX5 integrates seamlessly into all major OEM controllers whether it's the AgLeader, Trimble, TopCon, John Deere Green Star or can be managed with the AgXcel Auto X compact controller.

**FREE QUOTATION  
CALL US TODAY!**



116 E. 6TH STREET  
KEARNEY, NE 68847



877.218.1981



WWW.AGXCEL.COM



## AGXCEL FERTILIZER APPLICATION

## GX5 Hydraulics

Planter & Grain Drill Fertilizer Application Systems

**We have multiple options to meet your needs!**

Take Control with the AgXcel Rate Systems.

### AgXcel Magnetic Flow Meter

- No mechanical moving parts for longevity
- Low sensitivity to turbulence
- Ideal for variable rate application
- Measures flow at 70 pulses per gallon
- Performance not affected by product viscosity or density
- Measures flow at 1135 to 2271 pulses per gallon on hydraulic systems

### GX5 Universal Mt. Toolbar Bracket

- Allows the GX5 to be mounted on any toolbar or saddle tank mount
- Convenient and affordable



### GX5 JD 1770 Mounting Bracket

- Allows for a custom install
- Easy install on JD 12, 16, and 24 row planters



Mag flow meter

### AutoX Compact Plus

Looking for a compact controller for single rate management? Consider our AutoX Compact Plus controller. Packed with all the important options for managing either in furrow fertilizer placement or 2x2 this controller has it all. The AutoX Compact is a 3-section automatic rate controller for liquid and anhydrous with built-in boom switches on the console. Its all-in-one design makes it a convenient, simple user friendly package at a very economical price.



AutoX- Compact Plus

### AutoX Compact Features:

- Records area and volume in 3 independent pairs of counters so individual jobs can be tracked
- On-the-go rate adjustment
- Push-button auto/manual feature for spot treatments
- Minimum flow feature to ensure proper application pattern as ground speed slows to extremes
- Precise rate control regardless of field conditions
- Flow based control